

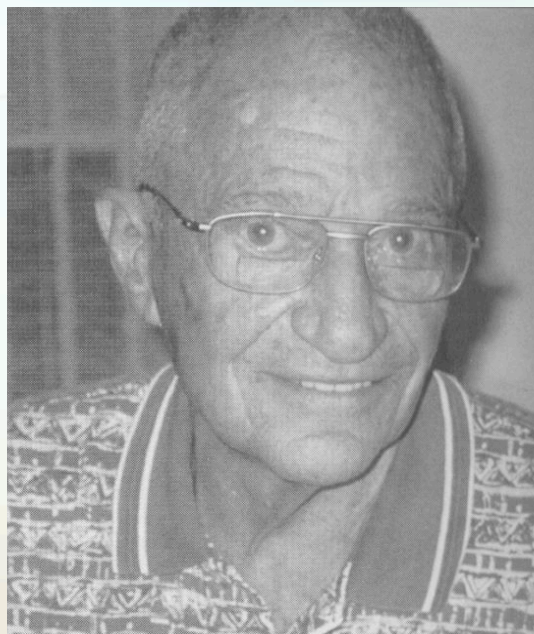


The NYU Neurosurgery “Gang”

CHIEFS OF NEUROSURGERY AT NYU



Thomas I. Hoen
1951-61



Joseph Ransohoff
1961-93



Patrick J. Kelley 1993-

NYU'S NEUROSURGERY "GANG"





The Individual Neurosurgeons

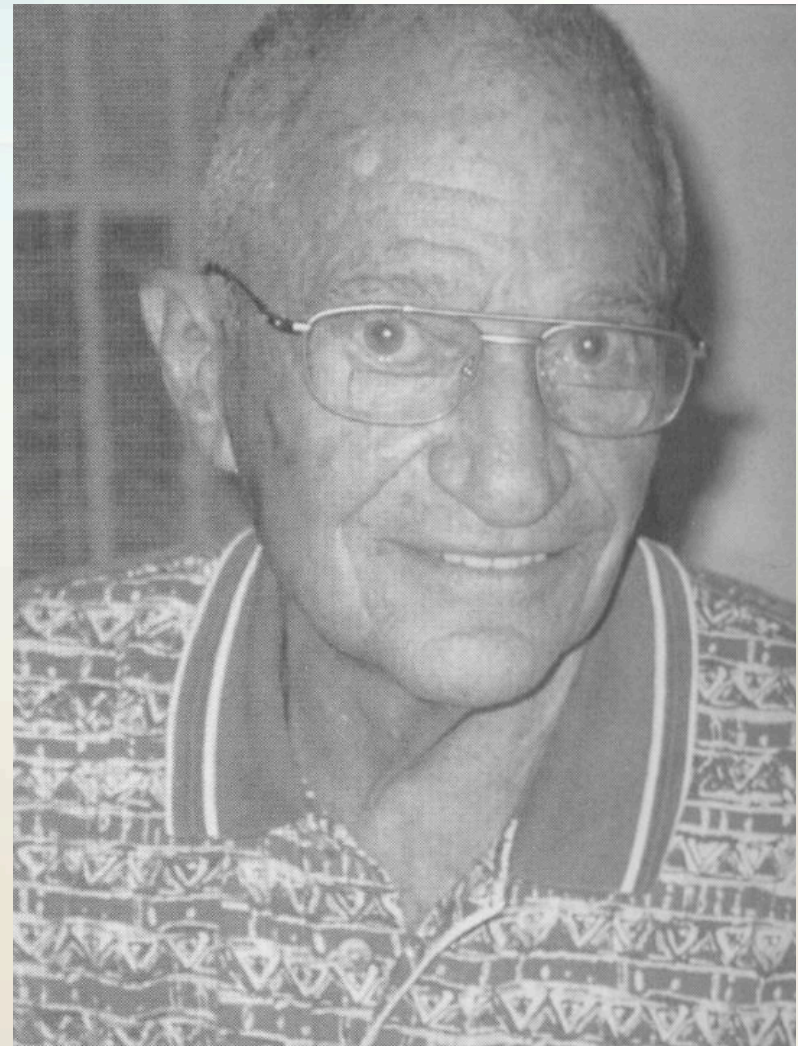


NYU's Joseph Ransohoff

Joseph Ransohoff was recruited to NYU from NINY to become Chairman in 1961.

**Joseph Ransohoff
Chairman
Department of Neurosurgery
1961-93**

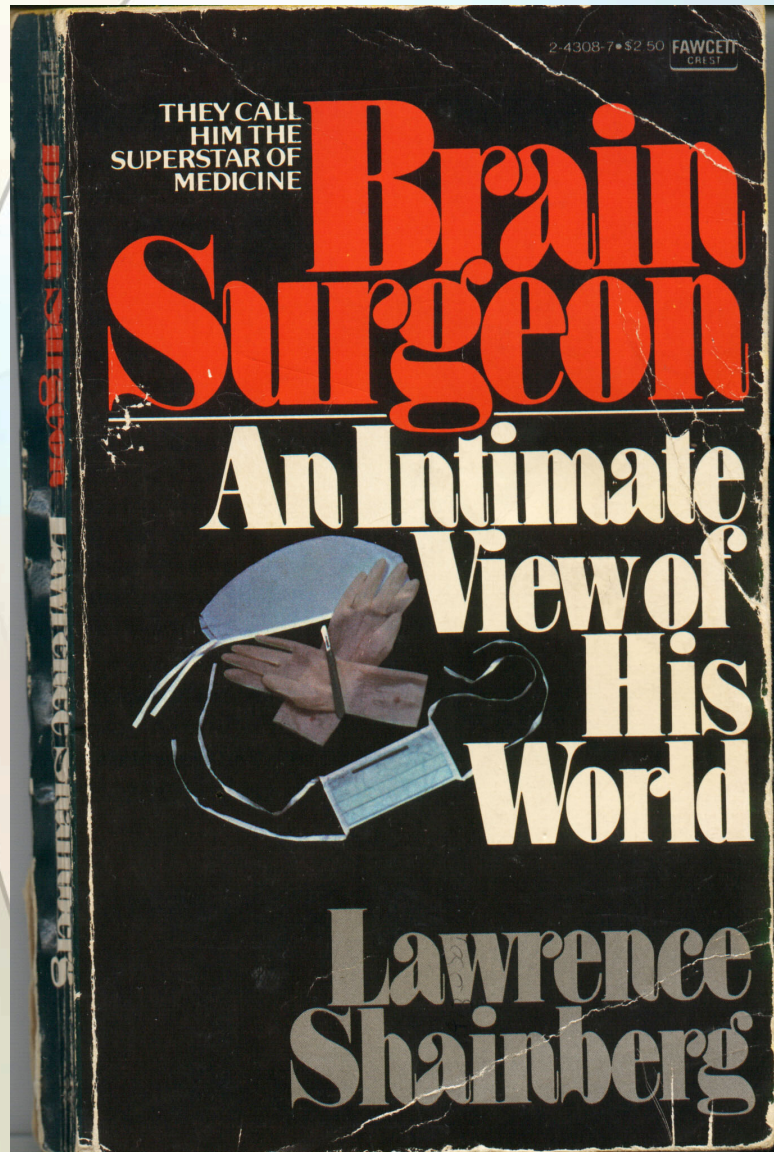
- **College: Harvard**
- **Medical School: University of Chicago**
- **Residency: Montefiore Hospital**
- **Fellowship: NINY**



Ransohoff knew how to work hard and play hard.



Ransohoff had an impact on Pop Culture.



His role in neurosurgery was recognized by the popular press.

2001

OBITUARIES

**Joseph Ransohoff, a Pioneer
In Neurosurgery, Dies at 85**

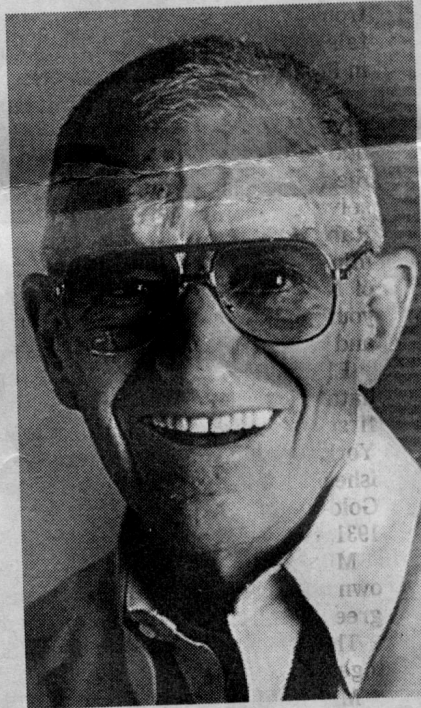
By WOLFGANG SAXON

Dr. Joseph Ransohoff, one of the country's foremost practitioners and teachers of neurosurgery, died on Jan. 30 at his home in Tampa, Fla., where he moved after retiring from New York University Medical Center. He was 85.

Dr. Ransohoff was director of neurosurgical services at Bellevue Hospital Center, as well as a professor and chairman of the department of neurosurgery at the N.Y.U. School of Medicine, from 1961 to 1992. He trained more than 60 neurosurgeons, many of whom went on to head departments at medical schools across the country.

Until recently, he was director of neurological surgery at the H. Lee Moffitt Cancer Center and Research Institute, based in Tampa, and taught at the University of South Florida College of Medicine.

At N.Y.U., he organized one of the world's first intensive care neurosurgery units, at Bellevue Hospital Center. He had a reputation for ingenuity in adapting advanced technologies — lasers, CAT scans, magnetic resonance imaging and the like — to brain surgery.



Dr. Joseph Ransohoff

Dr. Ransohoff is survived by his wife, Dr. Lori Cohen Ransohoff; their two children, Jake, 11, and a daughter and a son from

The New York Times
January 30, 2001

Cornell's Bronson Sands Ray